



Ez-Launch User Manual

EZ Alert Technology Series

Version 2.12.0

Table of Contents

1.0 Scope.....	3
2.0 System Architecture.....	3
3.0 Ez-Launch Installation.....	4
4.0 Ez-Launch Main Window.....	5
5.0 Setup Menu.....	6
5.1 Add Launchable Application.....	7
5.2 Remove Application.....	9
5.3 Edit Application Settings.....	10
6.0 View and Help Tabs.....	11
7.0 Adding a Program to EZ-Launch – OEM Application.....	11
Step 1- Select an icon.....	11
Step 2 – Select an executable.....	12
Step 3 – Application Name.....	12
Step 4 – Select a start location.....	12
Step 5 – Select a Configuration File.....	13
Step 6 – Command Line Arguments.....	13
Step 7 – Adapter Setup.....	13
Step 8 – Watch Processes.....	14
Step 9 – Save Configuration.....	14
8.0 Adding a Program to EZ-Launch – EZ Application.....	15
8.1 Steps 1-8.....	15
8.2 Step 9 – Use Auto Select.....	15
9.0 Launching an Application.....	16
10.0 Removing an Application.....	17
11.0 Editing Application Settings.....	18

1.0 Scope

The Ez-Launch software from XscapeEz Ltd. facilitates the use of RP1210 diagnostic software utilizing XscapeEz Ez-TAP systems. Multiple software programs can be linked to the Ez-Launch software, so hardware must only be configured once. Once initial configuration is complete, simply click on the desired program icon and select the desired remote node. Ez-Launch will then establish a point-to-point session and launch the diagnostic application.

2.0 System Architecture

Ez-Launch utilizes the Ez-Gate functionality of XscapeEz wireless modules. There are three hardware components to the basic architecture as shown in Figure 2-1:

1. Host System
2. Ez-Base
3. Ez-TAP remote module

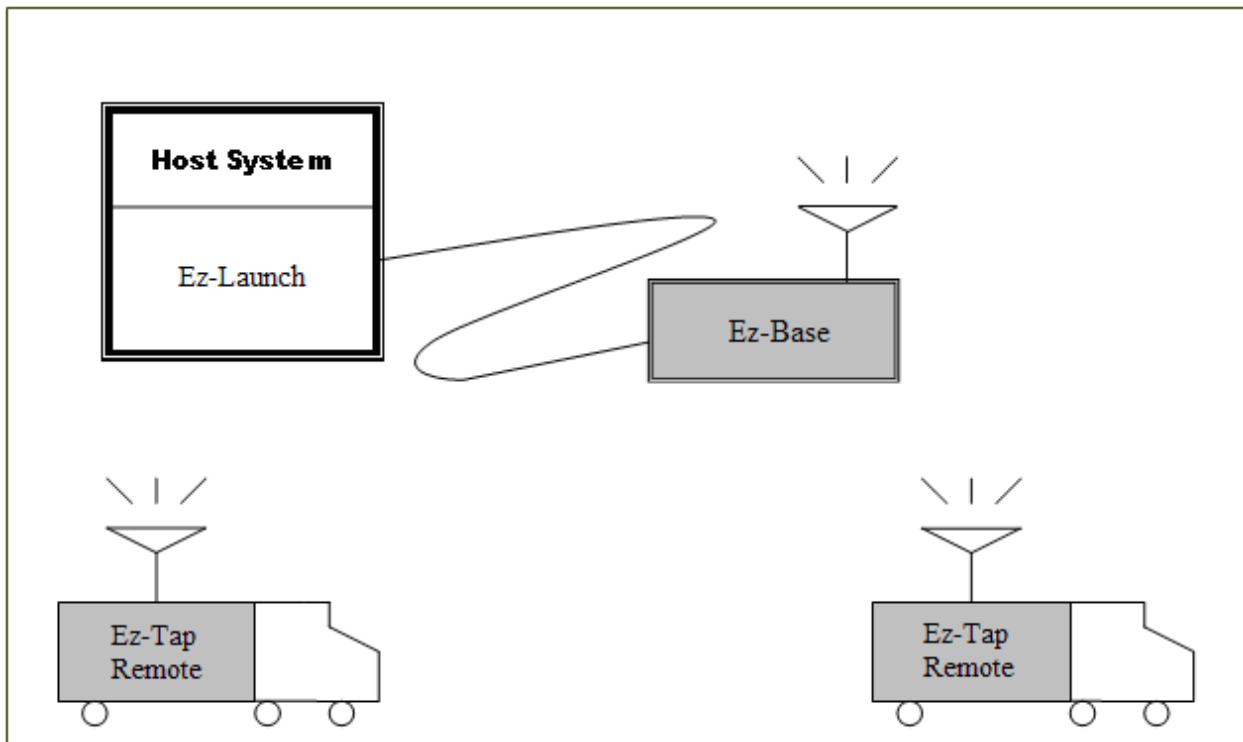


Figure 1- XscapeEz wireless system architecture.

3.0 Ez-Launch Installation

To install and run Ez-Launch, users will need the following:

1. A Windows based PC with available USB or serial port
2. Ez-Launch installation CD
3. Ez-Base unit
4. USB or RS-232 cable (depending on Ez-Base)
5. XscapeEz EZ1210 (already installed, or the installation files)*

*If XscapeEz EZ1210 is not already installed on the PC, it must be installed before attempting to run Ez-Launch. The EZ1210 installation can be run from an installation CD that came with an XscapeEz device, or can be downloaded from <http://www.xscapeez.com/EZ%20TAP.html>.

To install Ez-Launch, run setup.exe from the Ez-Launch installation CD. Setup will guide you through the rest of the installation process. Once installation is complete, Ez- Launch can be launched from the start menu. Ensure that EZ1210 is installed and an Ez-Base unit is connected to the PC before starting Ez- Launch.

4.0 Ez-Launch Main Window



Figure 2- EZ-Launch main window.

The EZ-Launch main window allows users to access software settings through the menu bar, and launch configured applications from buttons added by the user. Until applications have been added, a pop-up window will notify the user that applications can be added using the *Setup* menu.

EZ-Launch can be linked with up to eight user-specified programs. As applications are added to EZ-Launch, buttons will be added to the window. Each will display an optional icon chosen by the user, and has a user assigned name.

5.0 Setup Menu

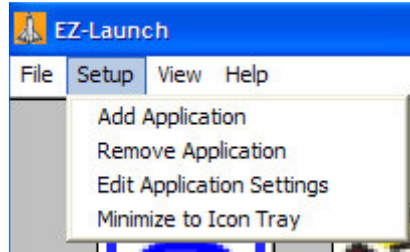


Figure 3- The EZ-Launch setup menu allows users to configure software settings.

The *Setup* menu in EZ-Launch allows users to add/remove programs, change settings for EZ-Launch and its associated programs, and minimize the EZ-Launch window.

Definitions:

Add Application- Opens the window to add programs to EZ-Launch.

Remove Application - Allows users to select a program to remove from EZ-Launch.

Edit Application Settings – Allows users to select a program and edit its launch settings.

Minimize to Icon Tray – Minimizes EZ-Launch to the icon tray. After selecting this option, EZ-Launch will continue to minimize to the icon tray whenever the window exit (X) button is clicked. To exit EZ-Launch, select File>>Exit.

5.1 Add Launchable Application

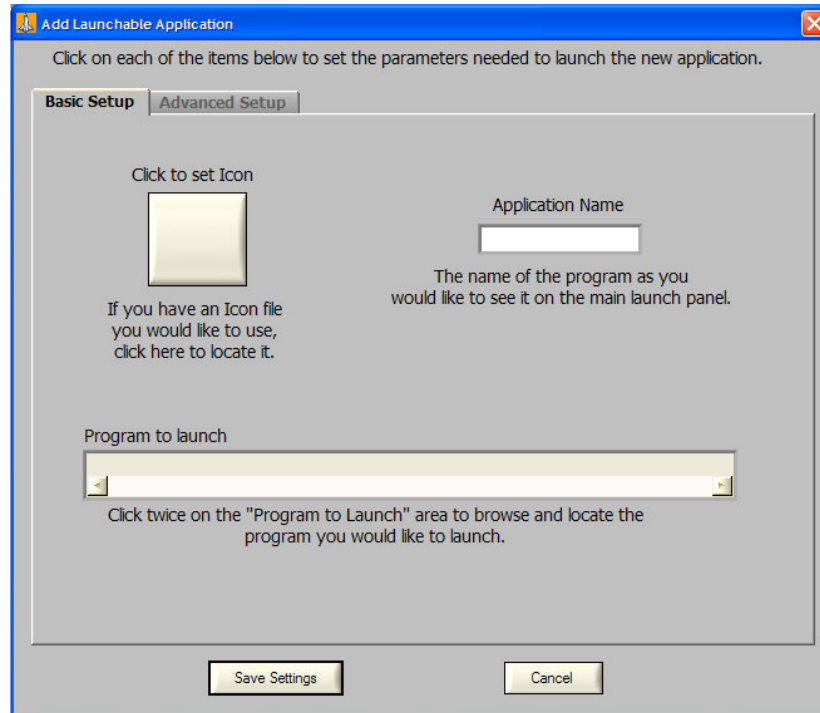


Figure 4a- The Add Launchable Application window is used to configure settings for application linked to EZ-Launch.

The *Add Launchable Application* window is the interface for configuring the applications linked to EZ-Launch. When starting an application, EZ-Launch can; run a configuration file before startup, pass command line arguments to the application, even reconfigure XscapeEz devices before startup. To help differentiate applications in the main window, users may assign a custom icon to the application's button, as well as specify a name that will appear with the button. For an example of application setup, refer to Section

Basic Setup Control Definitions:

Click to set icon button – Opens a file selection window to select the icon displayed on the application button. The button supports .tif, .pcx, .bmp, .dib, .rle, .ico, .jpg, .png, .wmf, and .emf file types. However, .ico files should not be larger than 50k bytes.

Path to Executable – The file path for the desired executable. Double click the entry field to open a file selection window.

Application Name – The name entered in this field will be displayed with button in the EZ-Launch main window.

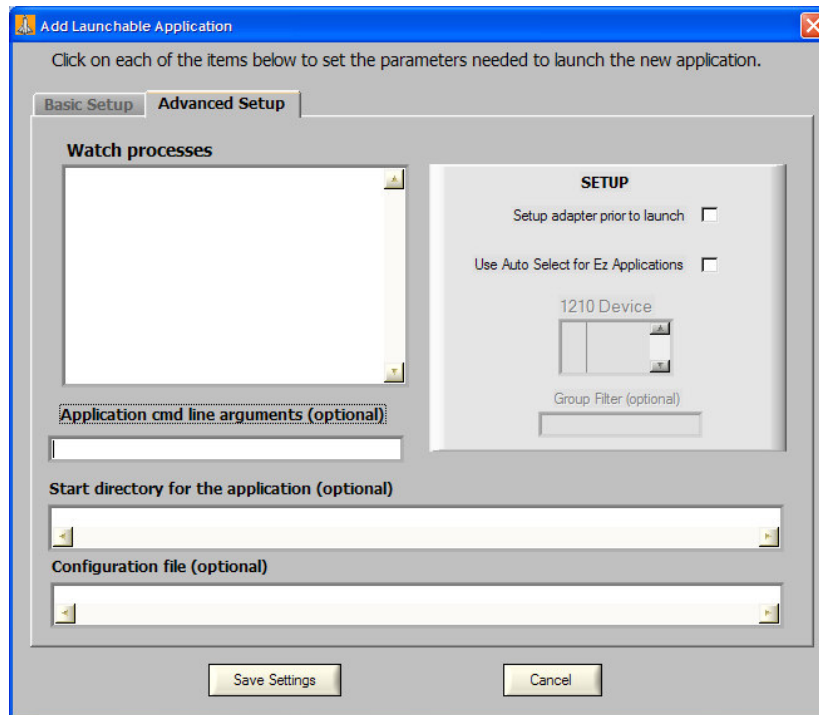


Figure 5b- The Add Launchable Application window is used to configure settings for application linked to EZ-Launch.

Advanced Setup Control Definitions:

- Setup adapter prior to launch** – Selecting this option will assign a unique address and channel to the selected adapter. Once the application is closed, the unit will be returned to its default settings.
- Use Auto Select for EZ Applications** – When launching an XscapeEz EZ application, enabling this option will pass information for the selected unit to the application, bypassing the device selection window in the launched application.
- 1210 Device** – The RP1210 device EZ-Launch should use to configure the remote unit.
- Group Filter** – When selecting a unit for the application, EZ-Launch will only display units with a group matching the group filter. Leaving this field blank will display all units.
- Start directory for the application** – The directory the executable should be launched from. Double click the entry field to open a file selection window. If this option is not used the launched application will be launched from it’s own program folder.
- Configuration file** – Before launching the application, EZ-Launch will run this file (.bat, .exe, .com). After the configuration file has exited, the application will be started. This option provides the ability to do any custom system changes prior to launching the application. Double click the entry field to open a file selection window.
- Application command line arguments** – When the application is started, EZ-Launch will pass these command line arguments to the executable.

5.2 Remove Application

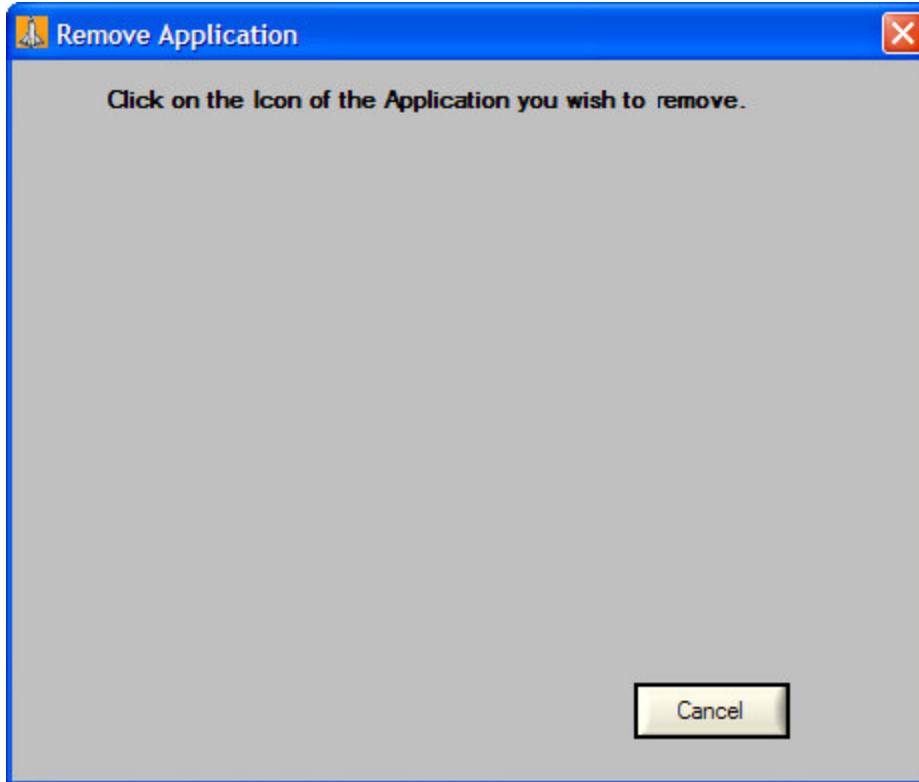


Figure 6- The Remove Application window deletes all settings for the selected application.

The *Remove Application* window will display the buttons for all applications that have been added by the user. Click the button for an application button to remove an application and all its settings from EZ-Launch.

5.3 Edit Application Settings

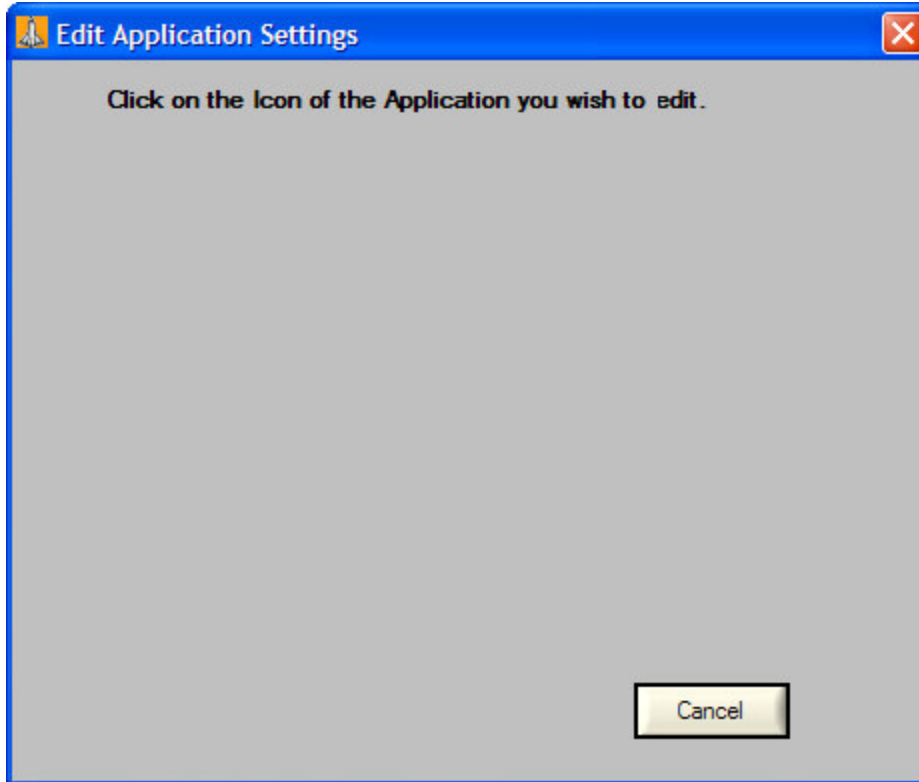


Figure 7- The *Edit Application Settings* window allows users to edit settings for a configured application.

The *Edit Application Settings* window displays all application buttons that have been added by the user. When an application button is selected, the *Application Settings* window (Figure 4) will open to allow users to alter the previous settings.

6.0 View and Help Tabs

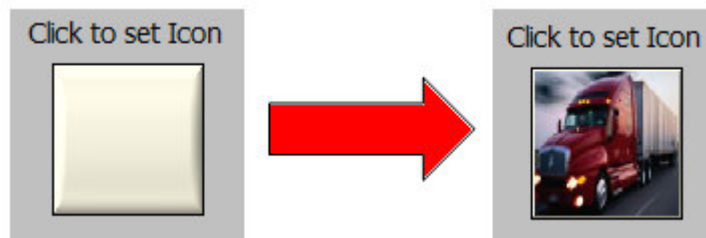
The *View* and *Help* tabs provide links to useful information for EZ-Launch. The Log file for software errors can be accessed through the *View* tab. Information such as software version and contact information, as well as this user's guide, are available through the *Help* tab.

7.0 Adding a Program to EZ-Launch – OEM Application

EZ-Launch is useful for launching OEM applications, as it eliminates the need to configure your XscapeEz adapter every time. Simply enter your desired settings when configuring your application, then launch it the same way every time afterward. The following steps will walk through setting up an OEM style application.

Step 1- Select an icon

To begin, you can select an icon to appear on the application button in the EZ-Launch main window. Click the blank button below *Click to set icon*, which will open a file selection window. Icons can be tif, .pcx, .bmp, .dib, .rle, .ico, .jpg, .png, .wmf, or .emf file types, but .ico files must be smaller than 50k bytes. Select the desired file and click *Select*. The icon you selected should now appear on the button.



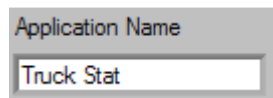
Step 2 – Select an executable

EZ-Launch can start any executable stored on the PC. To select an executable, double click the *Path to Executable* field to open a file selection window. If you know the file path, you can enter it manually instead. The example application is an executable called TruckStat.exe, which is found in C:\Program Files\Diagnostics\TruckStat. After selecting the executable, click *Select*. The file path should now appear in the *Path to Executable* field.



Step 3 – Application Name

The application name is displayed along with the button in the EZ-Launch main window. Application name may be an alphanumeric string up to 10 characters long. For this example, the application name will be Truck Stat.



ADVANCED SETUP OPTIONS: The following steps are optional and only needed for advanced application launching.

Step 4 – Select a start location

Many applications store information files or other support files in the directory along with the executable. If you would like to utilize different information files, you may specify an alternate start directory. (see section , advanced configuration) If you would like to run the application as it would run from the desktop or start menu, leave this field blank. EZ-Launch will automatically start the application from the original directory. The example application uses an .ini file in the executable directory, so this field is left blank.

Step 5 – Select a Configuration File

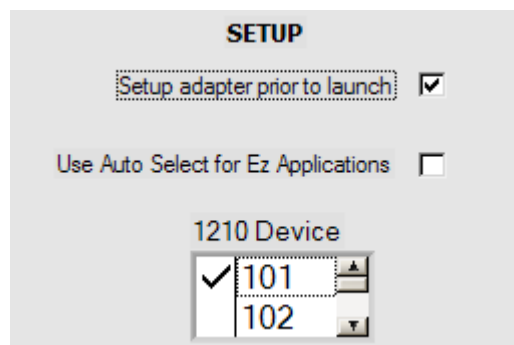
EZ-Launch has the ability to start a configuration file before starting the application. Configuration files may be .bat, .exe, or .com files. EZ-Launch will wait for the configuration file to exit before starting the application. There is no configuration file to be run for this application, so the field is left blank.

Step 6 – Command Line Arguments

EZ-Launch can pass command line arguments to the executable at startup. A space is automatically added to the executable, so there is no need for a leading space. Arguments may be entered as they would on any command prompt. This application has no command line arguments, so the field is left blank.

Step 7 – Adapter Setup

Before launching the application, EZ-Launch can set up the XscapeEz wireless adapter. This can be useful in environments where multiple wireless units all start on a home channel. Moving devices to alternate channels improves throughput and decreases retransmissions and collisions. For the example, Ez-Launch will use RP1210 device 101 to automatically move the selected unit to a unique channel and address. To configure the adapter prior to launch, check *Setup adapter prior to launch*, and select the same RP1210 device that the target application will use when it is launched.



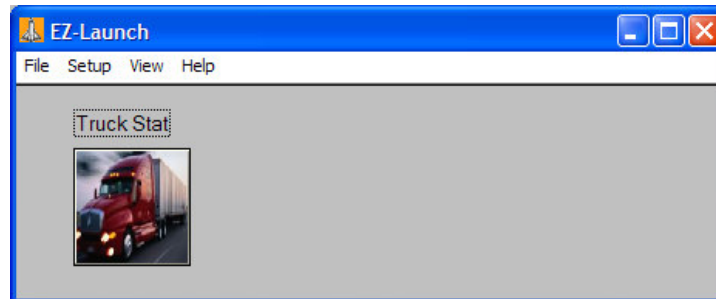
Step 8 – Watch Processes

When Ez-Launch starts a program it minimizes and waits for the launched program to finish. When it detects that the launched program has completed it reappears and may also move a remote RF unit back to it's original channel and address so it is important that Ez-Launch does not mistakenly believe that the program has completed. Sometimes the launched program starts one or more other programs to carry on the desired operation and then exits. To avoid premature re-appearance of Ez-Launch specify all processes in this list that may indicate that the desired program operation is still in effect. These names must be identical to those found if pressing ctrl-alt-delete and looking in the processes tab. Use the same capitalization and be sure to include any extension such as .exe. This setting is optional and if the launched program does not exit until all desired operations are completed then this may be left blank.

Step 9 – Save Configuration

All of the necessary information for configuring an OEM application has been entered.

Make sure to click *Save Settings*, at which point you will return to the main window. A new button should appear with the icon and name that were entered.



8.0 Adding a Program to EZ-Launch – EZ Application

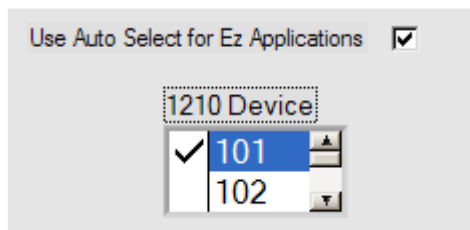
Most EZ applications from XscapeEz utilize the available units window to facilitate wireless network management. When launching EZ applications, selecting the *Use Auto Select for EZ Applications* passes all of the necessary information from EZ-Launch to the target application. This allows users to select a unit from EZ-Launch's available units window, and bypass the available units window of the target application.

8.1 Steps 1-8

Setting up EZ applications is identical to the process described in Section 7, with one additional step.

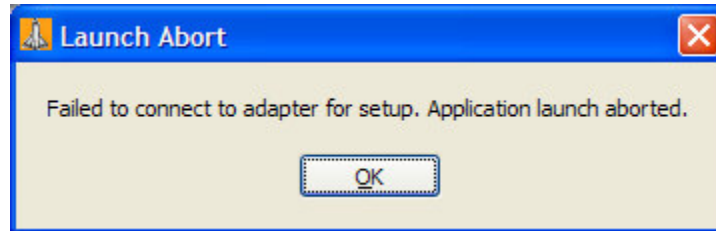
8.2 Step 9 – Use Auto Select

Ez-Launch can also be used to launch other Ez applications from XscapeEz. Many Ez applications present a list of units in range and allow the user to select one to perform an operation such as file transfer. To bypass the available units window in the target EZ application, check the *Use Auto Select for EZ Applications* box and specify the RP1210 device that Ez-Launch should use to communicate and provide a list of available units in range. Ez-Launch will display the available units and allow you to choose one. All of the required information for the selected unit will be passed from EZ-Launch to the target Ez application when the application is launched. This feature is only available for selected Ez applications from XscapeEz.

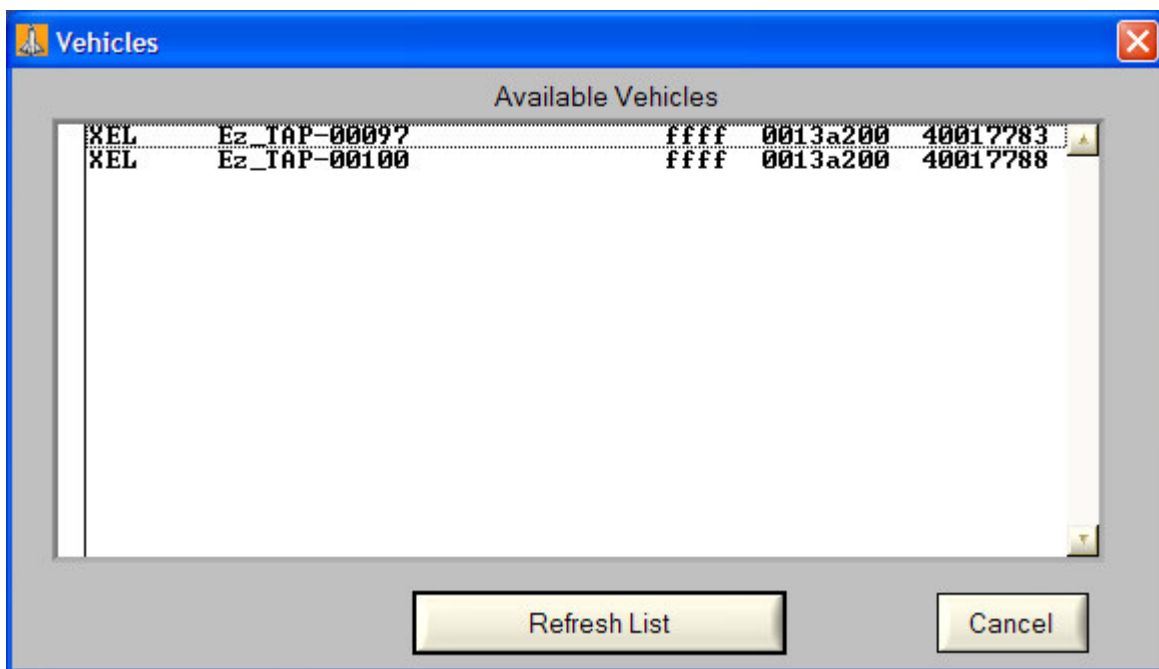


9.0 Launching an Application

To launch an application with EZ-Launch, simply click the button that was added to the main window after configuration. If the *Setup adapter prior to launch* option was selected, EZ-Launch will attempt to connect to the specified RP1210 device. If connection fails, a notification appears informing the user of the failed attempt.



Upon successful connection, EZ-Launch will display all available units. Select a unit from the list to launch the selected application.

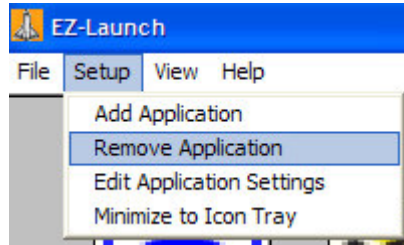


Select the desired unit from the list. If the desired unit is not on the list, it may be on a different channel, or it may not have power. Once the unit is selected, EZ-Launch will reconfigure it (if enabled), run a configuration file if one was specified, and launch the application.

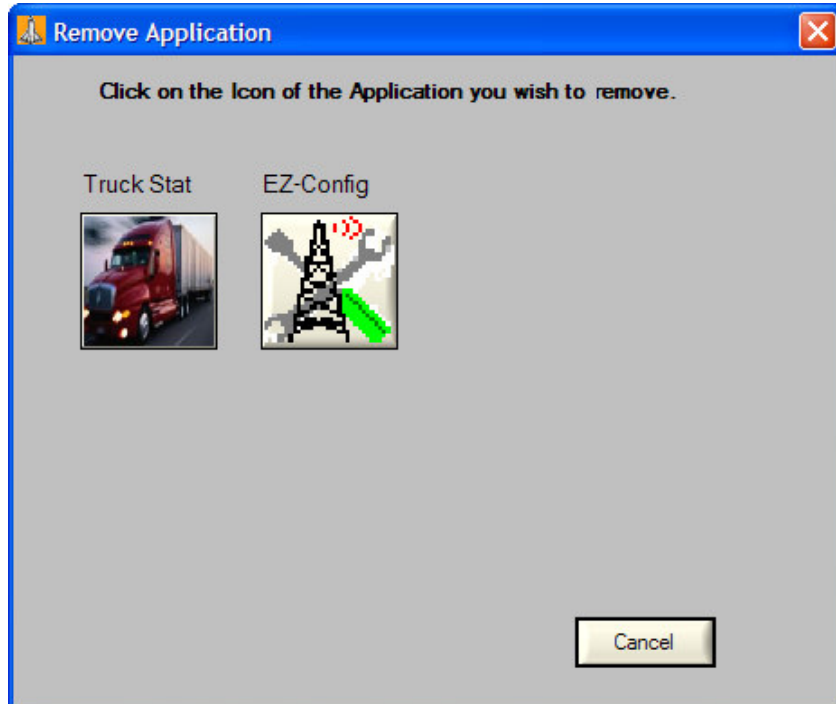
Once the application is closed, the unit will be returned to its defaults, and EZ-Launch will restore to the screen.

10.0 Removing an Application

It may become necessary to remove an application from EZ-Launch. To do so, select *Remove Application* from the *Setup* menu.



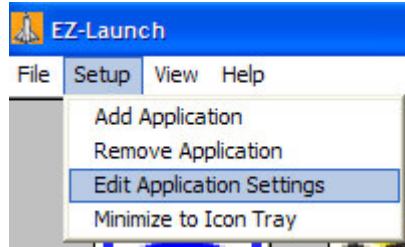
This will bring up a window displaying the buttons for all applications that have been added to EZ-Launch.



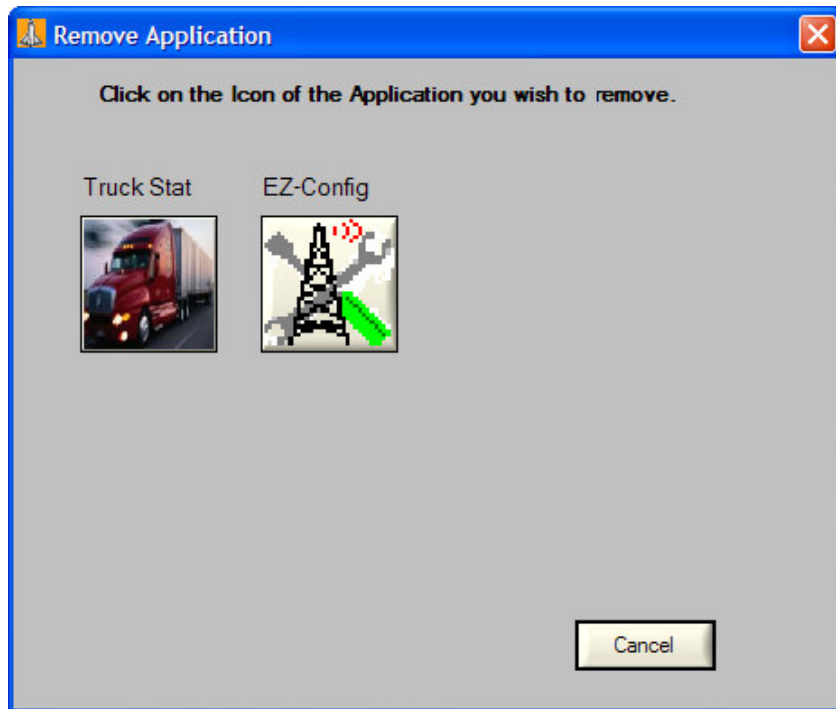
Simply click the button for the application to be removed. The user will be asked if they are sure they wish to remove the selected application. Click *Ok* to remove the application, or *Cancel* to abort removal.

11.0 Editing Application Settings

To edit the settings for an application that has been added to EZ-Launch, select *Edit Application Settings* from the *Setup* menu.



This will bring up a window displaying all application that have been added to EZ-Launch.



Click the application to open a window similar to the one displayed when adding an application. Refer to sections 7.0 and 8.0 for configuring application settings.